

CAMBRIDGE  
RESEARCH PARK

# Enterprise II

AVAILABLE Q2 2026

HIGH-SPECIFICATION R&D, ADVANCED  
MANUFACTURING & STORAGE UNITS IN  
CAMBRIDGE NORTH'S INNOVATION CAMPUS

4,768–19,170 sq ft

TOGETHER WE THRIVE





An aerial photograph of Cambridge Research Park, showing a cluster of modern, two-story office buildings surrounded by lush green fields and a winding river. The image is overlaid with a network diagram consisting of numerous thin lines and small circular nodes, suggesting connectivity and progress. The text "Build connections, accelerate progress" is centered over the top half of the image.

# Build connections, accelerate progress



Cambridge Research Park is an extraordinary development of world-class innovation, with 112 acres of open green space.

Enterprise II introduces a tight-knit cluster of two-storey best-in-class buildings with leading sustainability credentials. Each of the high-specification units within draws on best practice and industry insight from across the UK's Golden Triangle and provides occupiers with flexible and adaptable space in which to grow and thrive.

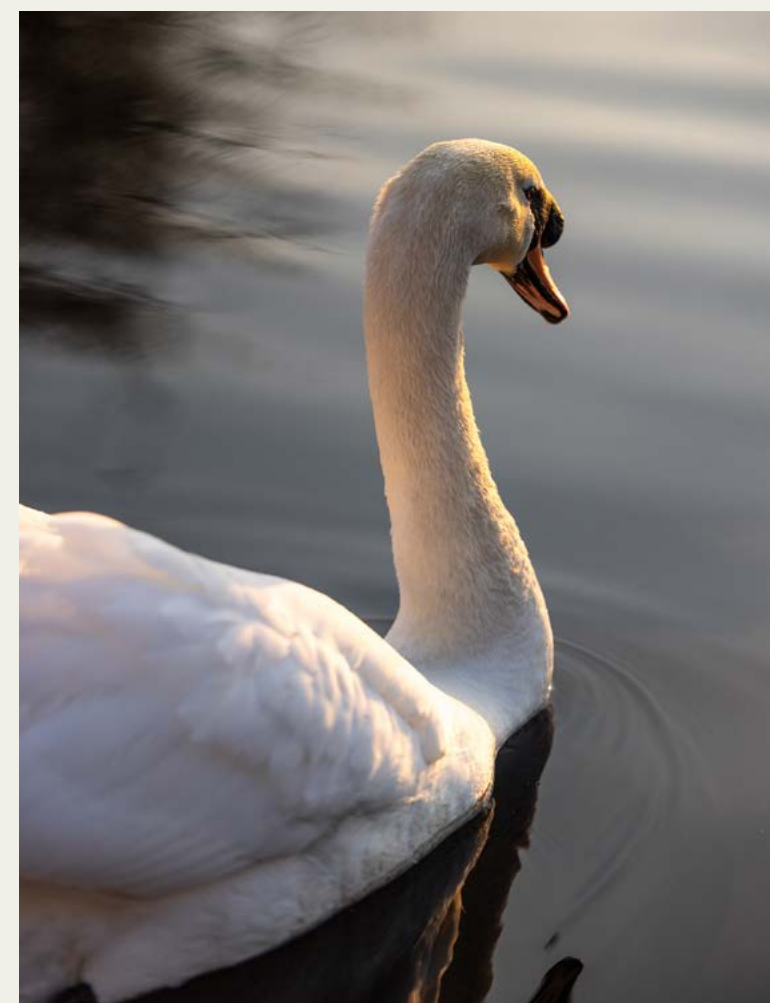
Find your innovation and production space in a dynamic, inspiring place where ideas take shape and scale.



# Flourish amidst nature's tranquillity

Cambridge Research Park's specialist ecosystem is overseen by a dedicated community manager who acts as the go-to for introductions, pilots, and community hires. The campus offers an array of amenities including new end-of-trip facilities, meeting and conference rooms ideal for networking opportunities, a full active events' programme and an on-site campus café with outdoor terrace and stunning views over the lake.

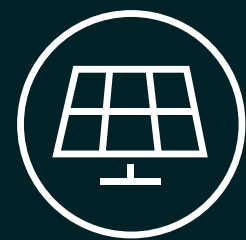
With lots of outdoor space to explore – including a 38-acre nature reserve, lake waterfront and trails for walking, running and cycling – people and progress can thrive together.



# Work in a sustainable, biodiverse location



This scheme is designed to leading ESG specifications, including the following highlights:



## ON-SITE RENEWABLE ENERGY

Solar roof panels connect directly into each unit's electrical supply to help power day-to-day operations.



## BIODIVERSE, OUTDOOR SPACES

Enhanced landscaping creates greater connections to nature and the wider campus, with a 10.8% Biodiversity Net Gain.



## ENVIRONMENTALLY FRIENDLY DESIGN

Highly insulated buildings with electric heating and cooling (using air source heat pumps), roof lights for natural light, and LED lighting throughout.



## SUSTAINABLE TRANSPORT SOLUTIONS

Including cycle storage for 260 bikes and 131 electric vehicle charging points (59%), with the base infrastructure to increase this to all parking spaces.



## CARBON OFFSETTING ON CAMPUS

Planting further wildflower meadows and native trees within the site's own protected nature reserve, and on campus verges.

## TARGETING

**BREEAM**<sup>®</sup>  
OUTSTANDING

BREEAM Outstanding



EPC A+ rating



The scheme is designed to fall below the target of 475–600 kgCO<sub>2</sub>/m<sup>2</sup> of embodied carbon in construction, with the units also aiming to be Net Zero Carbon in operation.



# Up to 90,511 sq ft for advanced research, prototyping and production

Each unit offers ancillary office space to the front elevation, with associated parking, service areas and landscaped grounds.






	GROUND FLOOR	FIRST FLOOR	TOTAL	CLEAR INTERNAL HEIGHT
UNIT	SQ FT /SQ M (GEA)	SQ FT /SQ M (GEA)	SQ FT /SQ M (GEA)	M
10	11,420 / 1,061	2,529 / 235	13,949 / 1,296	8
11	10,538 / 979	2,508 / 233	13,046 / 1,212	8
12	7,341 / 682	1,851 / 172	9,192 / 854	8
13	8,482 / 788	1,496 / 139	9,978 / 927	8
14	4,047 / 376	721 / 67	4,768 / 443	6.5
15	4,488 / 417	786 / 73	5,274 / 490	6.5
16	4,940 / 459	883 / 82	5,823 / 541	6.5
17	6,577 / 611	1,141 / 106	7,718 / 717	6.5
18	6,297 / 585	1,109 / 103	7,406 / 688	6.5
19	5,812 / 540	1,001 / 93	6,813 / 633	6.5
20	5,479 / 509	969 / 90	6,447 / 599	6.5



Be part of a specialist ecosystem

11 flexible units  
from 4,768 sq ft [443 sq m] upwards,  
with interconnecting options

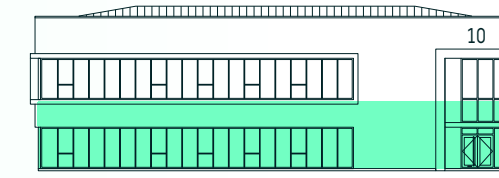
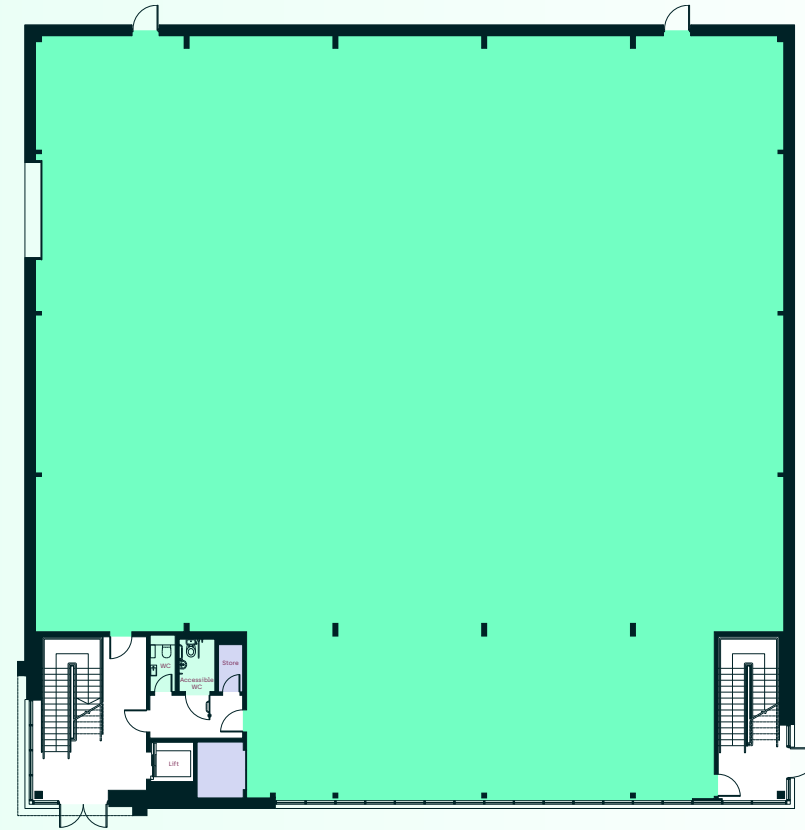
14–20%  
ancillary office space per unit

-  Bike storage
-  Gas storage location
-  Plant location

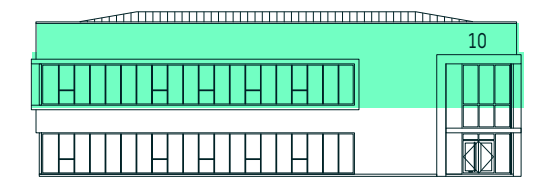
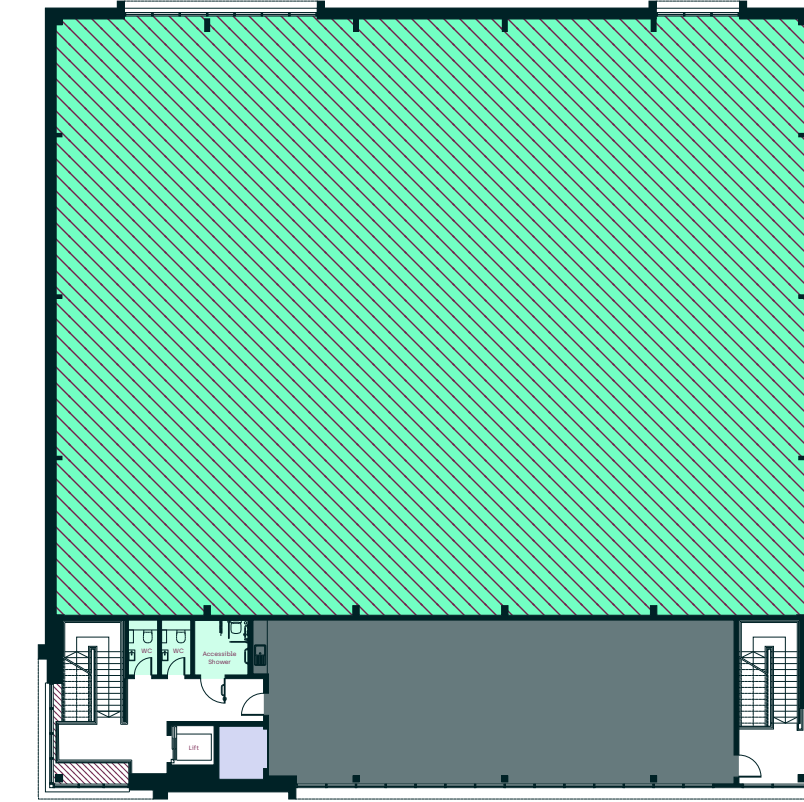
# Unit 10

GROUND FLOOR	FIRST FLOOR	TOTAL
SQ FT /SQ M	SQ FT /SQ M	SQ FT /SQ M
11,420 / 1,061	2,529 / 235	13,949 / 1,296

GROUND FLOOR



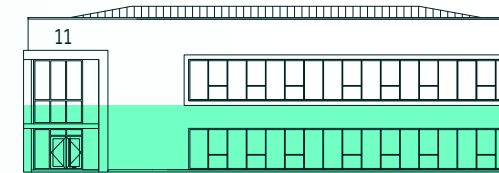
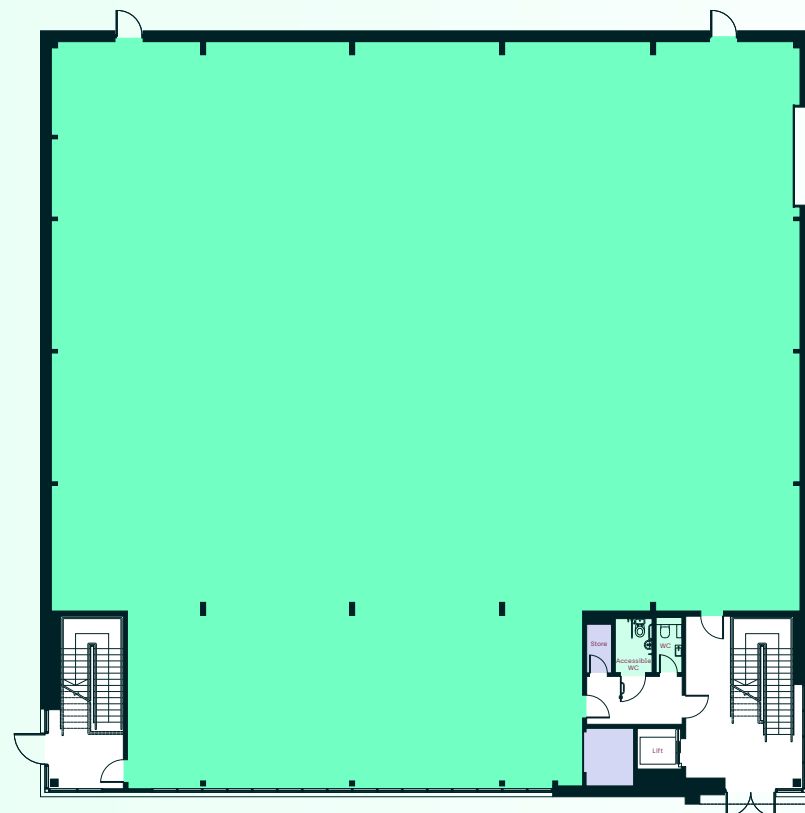
FIRST FLOOR



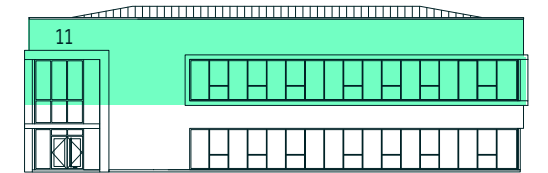
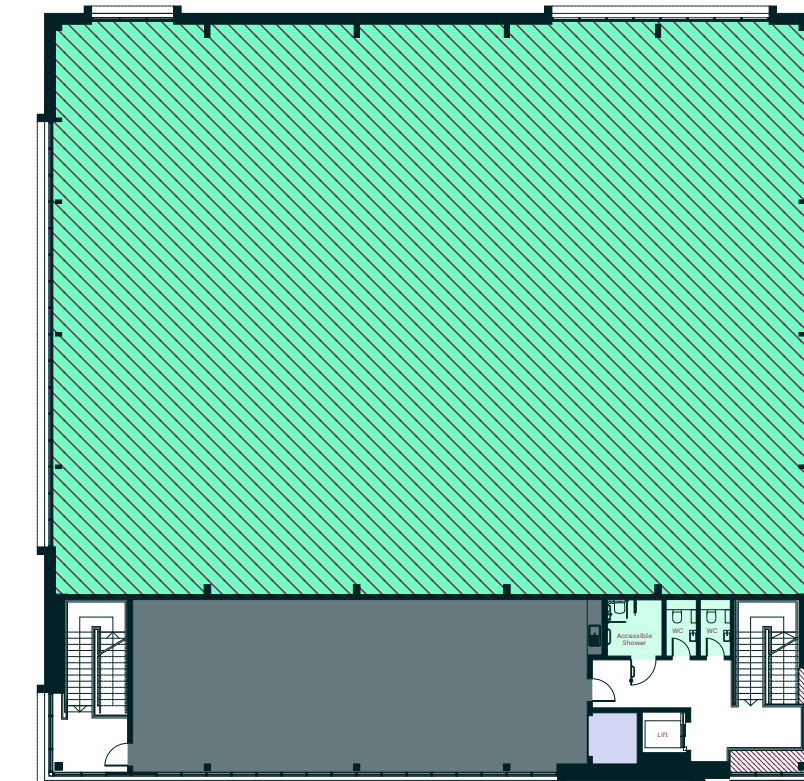
# Unit 11

GROUND FLOOR	FIRST FLOOR	TOTAL
SQ FT /SQ M	SQ FT /SQ M	SQ FT /SQ M
10,538 / 979	2,508 / 233	13,046 / 1,212

GROUND FLOOR



FIRST FLOOR

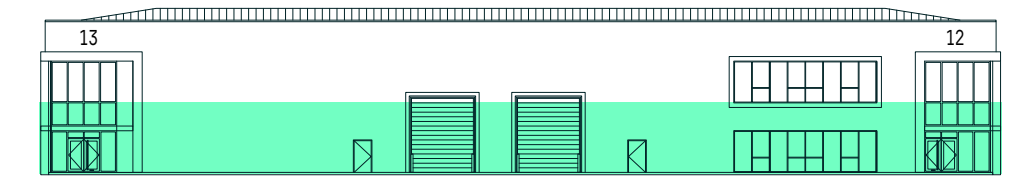
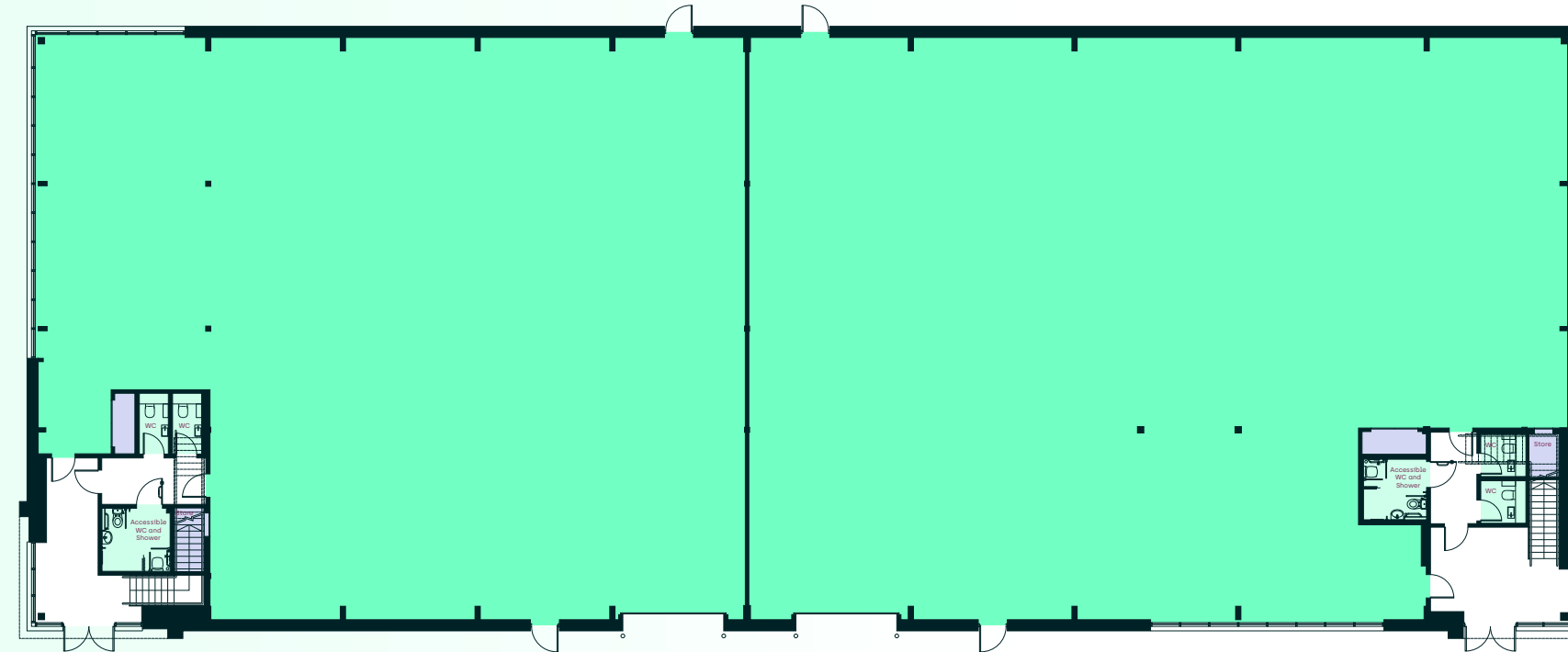


- Available R&D
- Available Offices
- WCs
- Risers/Cupboards
- Core
- ▨ Potential mezzanine floor

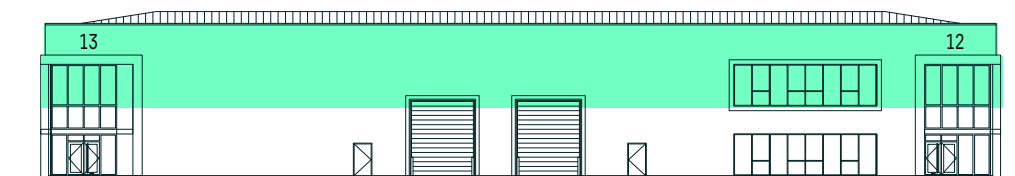
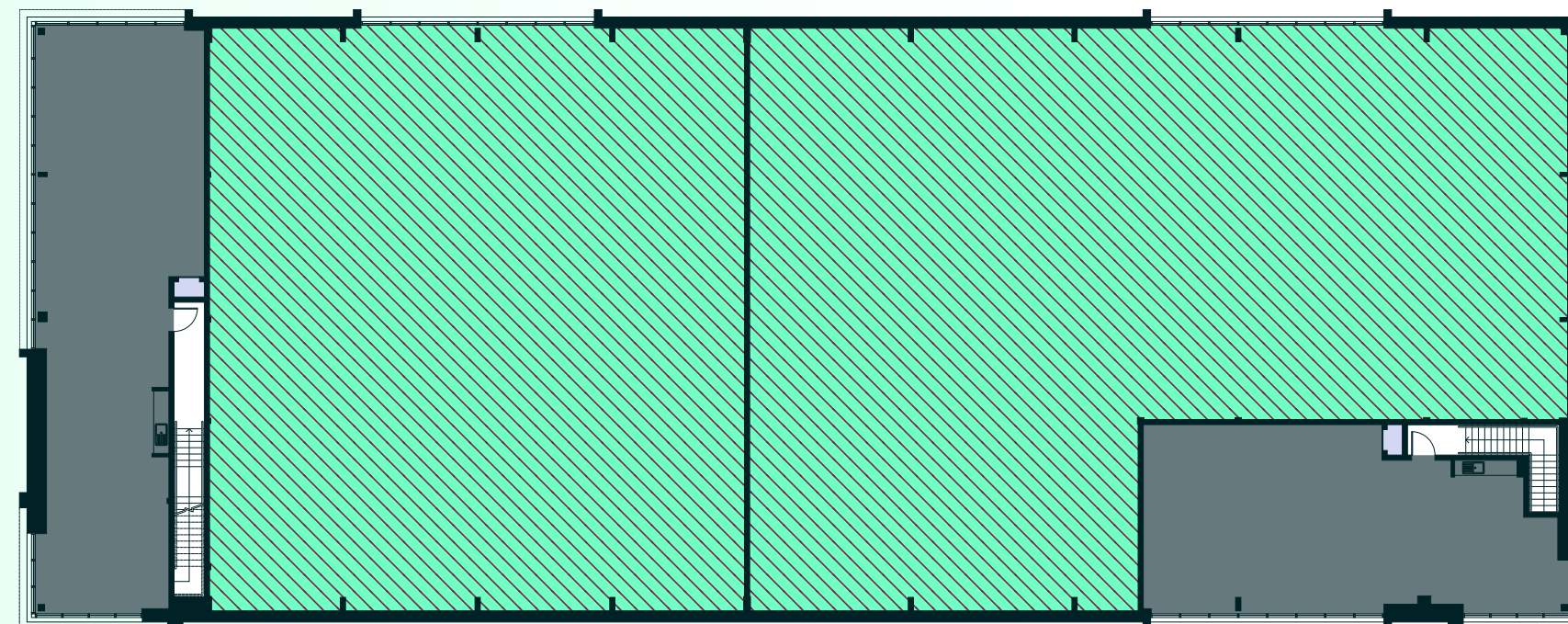
# Units 12-13



## GROUND FLOOR



## FIRST FLOOR



	GROUND FLOOR	FIRST FLOOR	TOTAL
UNIT	SQ FT /SQ M	SQ FT /SQ M	SQ FT /SQ M
12	7,341 / 682	1,851 / 172	9,192 / 854
13	8,482 / 788	1,496 / 139	9,978 / 927

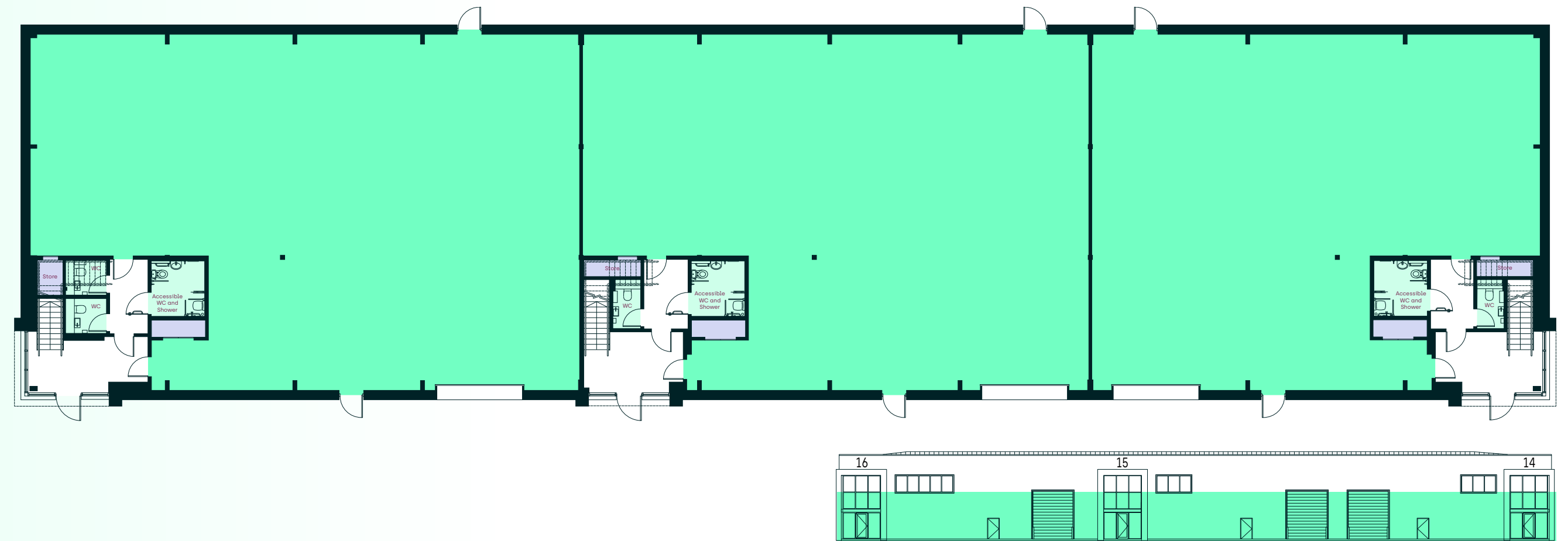
- Available R&D
- Available Offices
- WCs
- Risers/Cupboards
- Core
- ▨ Potential mezzanine floor

# Units 14-16

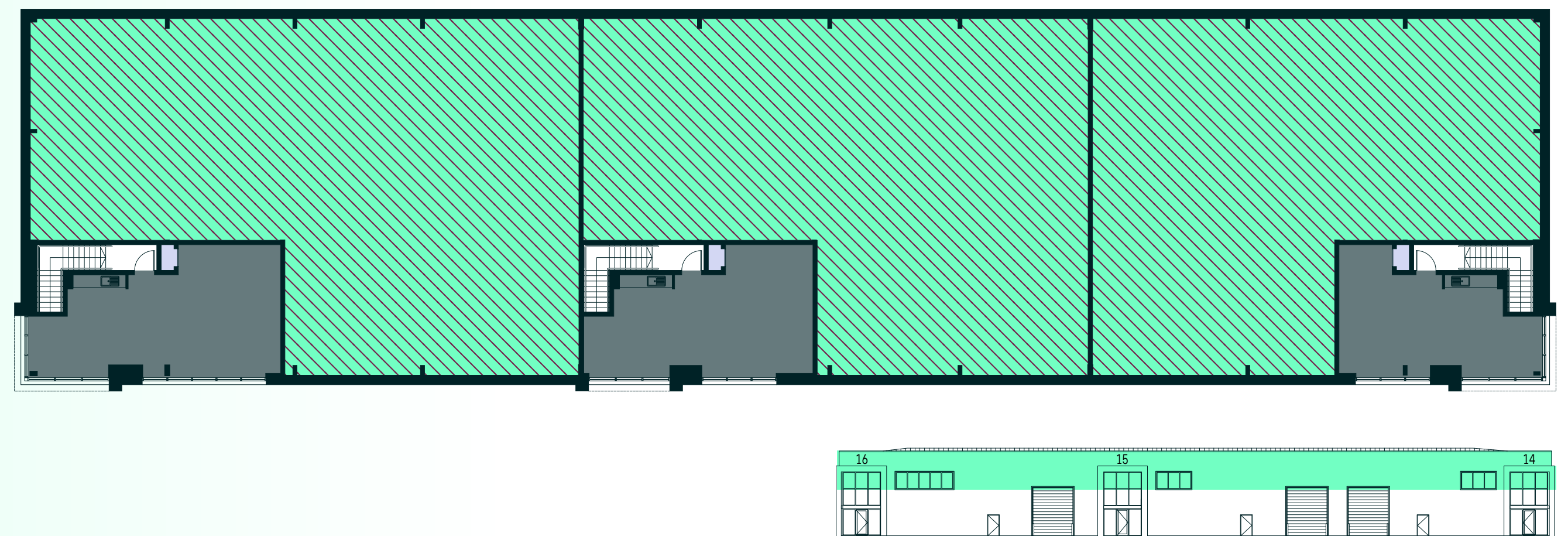


	GROUND FLOOR	FIRST FLOOR	TOTAL
UNIT	SQ FT /SQ M	SQ FT /SQ M	SQ FT /SQ M
14	4,047 / 376	721 / 67	4,768 / 443
15	4,488 / 417	786 / 73	5,274 / 490
16	4,940 / 459	883 / 82	5,823 / 541

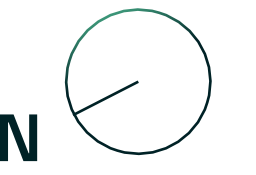
## GROUND FLOOR



## FIRST FLOOR



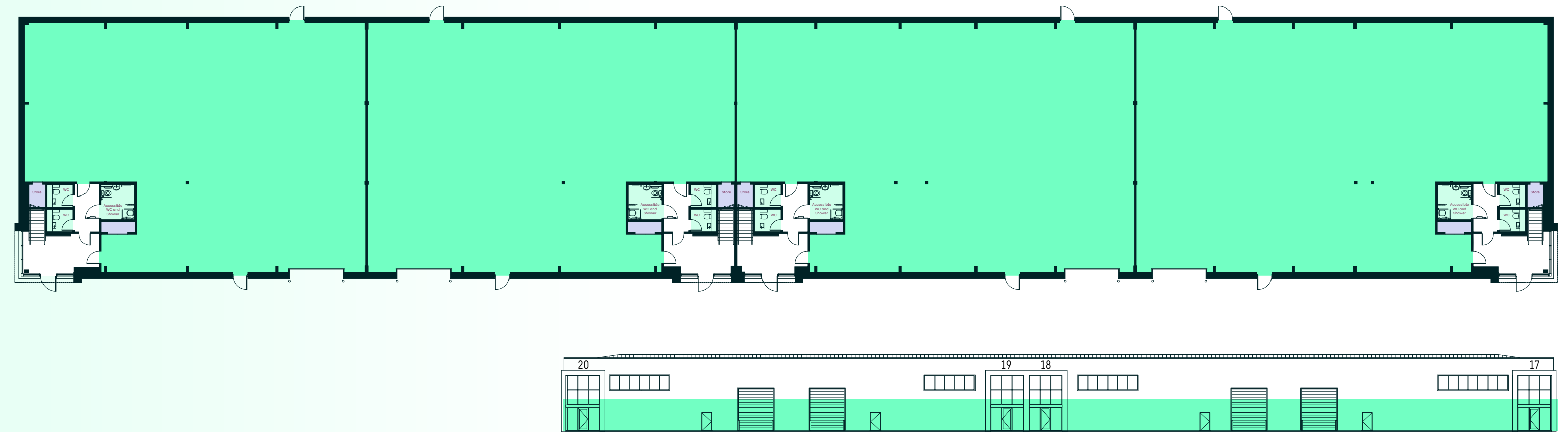
- Available R&D
- Available Offices
- WCs
- Risers/Cupboards
- Core
- Potential mezzanine floor



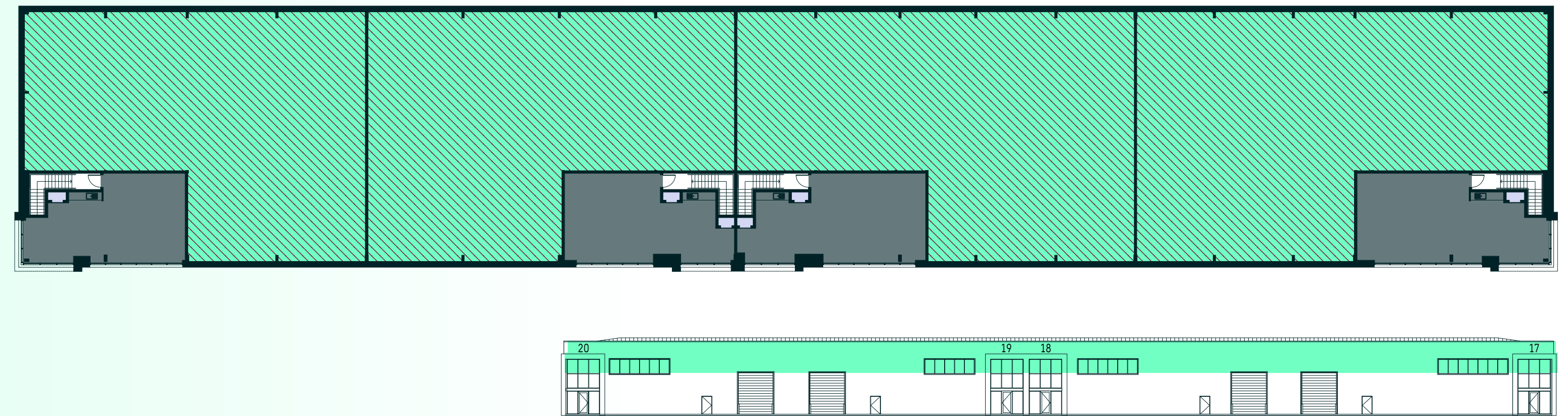
# Units 17–20

	GROUND FLOOR	FIRST FLOOR	TOTAL
UNIT	SQ FT /SQ M	SQ FT /SQ M	SQ FT /SQ M
17	6,577 / 611	1,141 / 106	7,718 / 717
18	6,297 / 585	1,109 / 103	7,406 / 688
19	5,812 / 540	1,001 / 93	6,813 / 633
20	5,479 / 509	969 / 90	6,447 / 599

## GROUND FLOOR



## FIRST FLOOR



- Available R&D
- Available Offices
- WCs
- Risers/Cupboards
- Core
- ▨ Potential mezzanine floor



### THE SITE

- Building 5000
- Cambridge Research Park
- Nature Reserve
- Development plots
- 1 Entrance
- 2 No 100 Bus Stop
- 3 Community Manager Office

### PARK AMENITIES

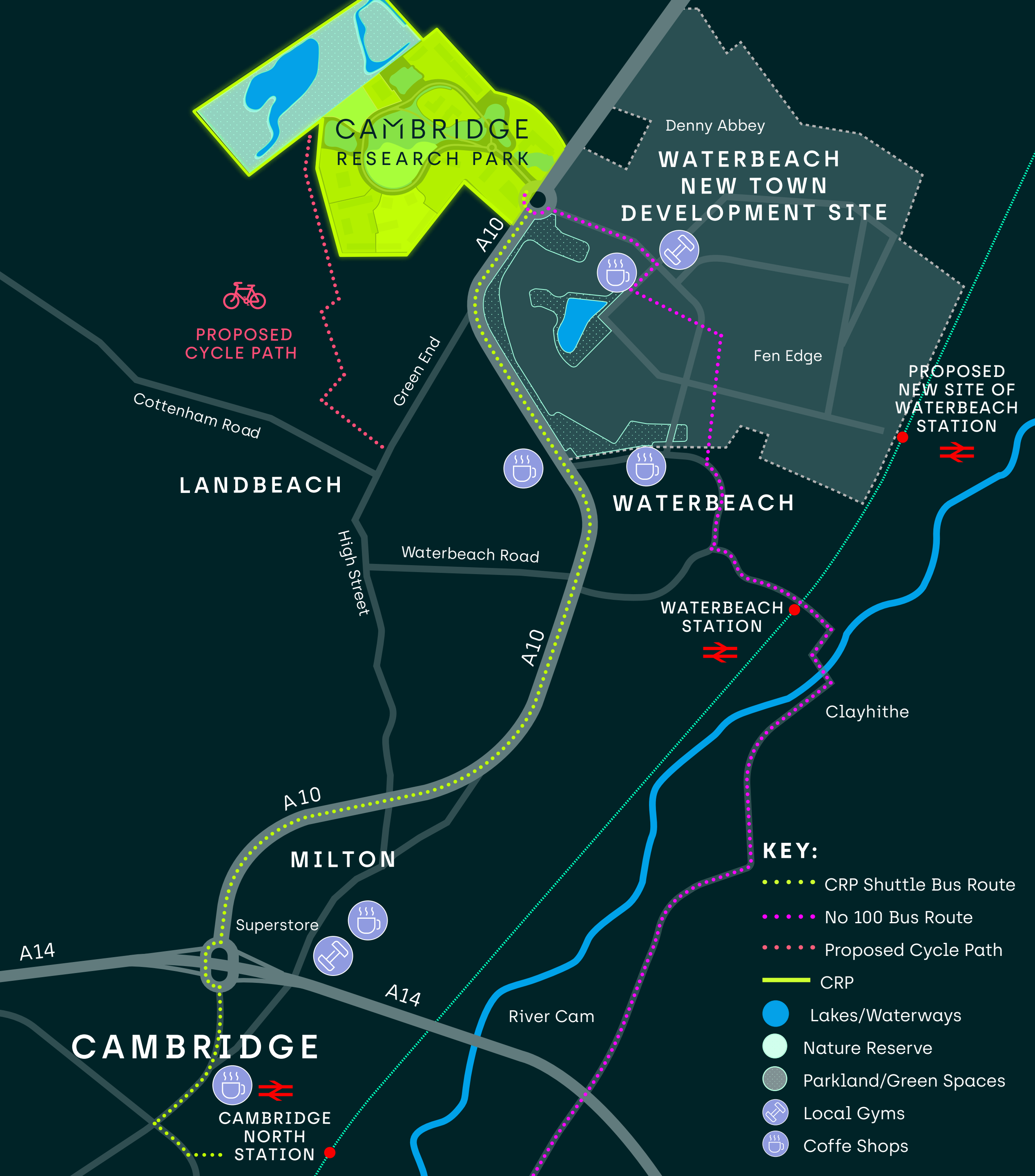
- Nature Reserve
- Shuttle Bus Stops

### ONSITE AMENITIES AT 2500

- The Boardwalk Café
- Conference Space
- Meeting Rooms
- JLL Management Office
- Yoga

### OCCUPIERS

1000	stobbs	Enterprise I	6100	Vindis	8200	centillion
			7100			
		GRIFOLS TeraView	7200	celixica		
2000			7300		9000	
3000		SMC Ltd. XARR	8100			
		PocDoc+		revvity		



# Find your campus space

0.5 miles  
to Waterbeach New Town

3 miles  
to Waterbeach Station

5.5 miles  
to Cambridge North Station

9 miles  
to Ely or central Cambridge

9 mins  
to A14

12 mins  
to M11

- KEY:**
- ..... CRP Shuttle Bus Route
  - ..... No 100 Bus Route
  - ..... Proposed Cycle Path
  - CRP
  - Lakes/Waterways
  - Nature Reserve
  - Parkland/Green Spaces
  - Local Gyms
  - Coffe Shops

---

**FOR MORE INFORMATION PLEASE CONTACT  
ONE OF OUR LETTING AGENTS:**

---

**CBRE**

**Peter Mangraviti**

+44 (0)7861 692 620

[peter.mangraviti@cbre.com](mailto:peter.mangraviti@cbre.com)

**Jeremy Rodale**

+44 (0)7766 780 590

[jeremy.rodale@cbre.com](mailto:jeremy.rodale@cbre.com)

**Chris Williams**

+44 (0)7796 694 501

[chris.williams@cbre.com](mailto:chris.williams@cbre.com)



**BIDWELLS**

**Walter Scott**

+44 (0)7918 081 533

[walter.scott@bidwells.com](mailto:walter.scott@bidwells.com)

**Rory Banks**

+44 (0)7976 832 083

[rory.banks@bidwells.co.uk](mailto:rory.banks@bidwells.co.uk)

---

[cambridgeresearchpark.co.uk](http://cambridgeresearchpark.co.uk)

---

[rlam.com](http://rlam.com)

---

---

**A DEVELOPMENT BY ROYAL LONDON ASSET MANAGEMENT**



Bidwells and CBRE for themselves and for the vendors or lessors of this property whose agents they are, give notice that: (i) the particulars are set out as a general outline only for the guidance of intending purchasers or lessees, and do not constitute nor constitute part of, an offer or contract; (ii) all descriptions, dimensions, references to condition and necessary permissions for use and occupation, and other details are given without responsibility and any intending purchasers or lessees should not rely on them as statements or representations of fact but must satisfy themselves by inspection or otherwise as to the correctness of each item; (iii) no person in the employment of Bidwells and CBRE has any authority to make or give any representation or warranty whatever in relation to this property. April 2026.