

CAMBRIDGE
RESEARCH PARK

Building 1000

TOGETHER WE THRIVE



AVAILABLE NOW

High-specification ground-floor
and first-floor Cat A office space

First Floor 5,858 sq ft

Ground Floor 7,723 sq ft



Spaces to bring your ideas to life

Cambridge Research Park is a thriving hub of innovation, home to businesses pushing the boundaries of human knowledge.

Positioned prominently at the campus entrance, Building 1000 offers refurbished CAT A offices with a striking double-height reception and sweeping glazed elevations,

creating a standout address for companies looking to make their mark.

With office space available on both ground and first floors, this is an incredible opportunity to establish your company in an inspiring and community-focussed campus.

Key features

Building 1000

SPECIFICATION

Fan coil air conditioning

Metal tile ceilings with LED lighting

Lighting with PIR control

New carpeting

Full access raised floor

Stunning double-height reception

13 person passenger lift

New toilets and shower

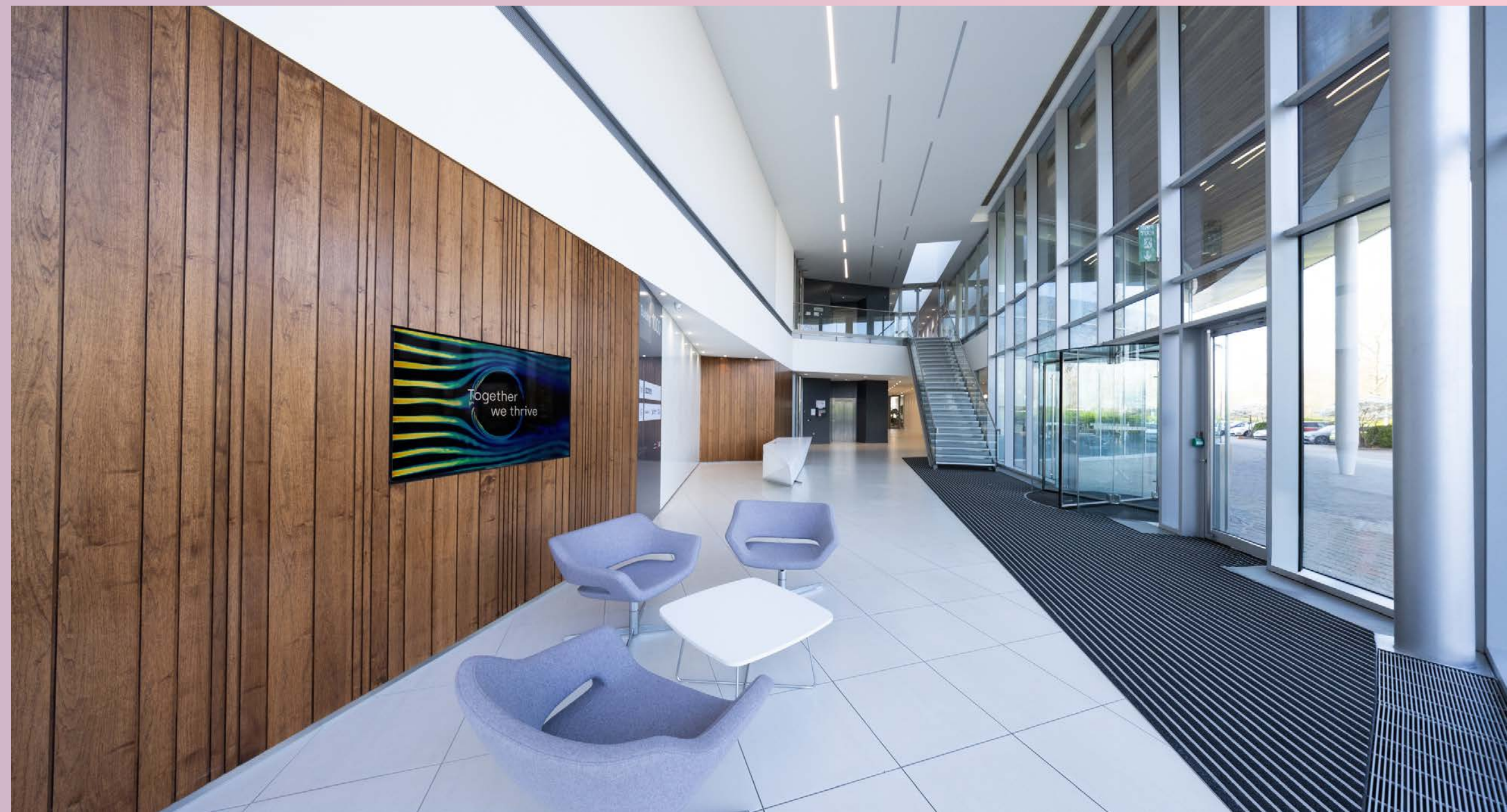
Building management system

Broadband and fibre optic links

1.5m planning grid

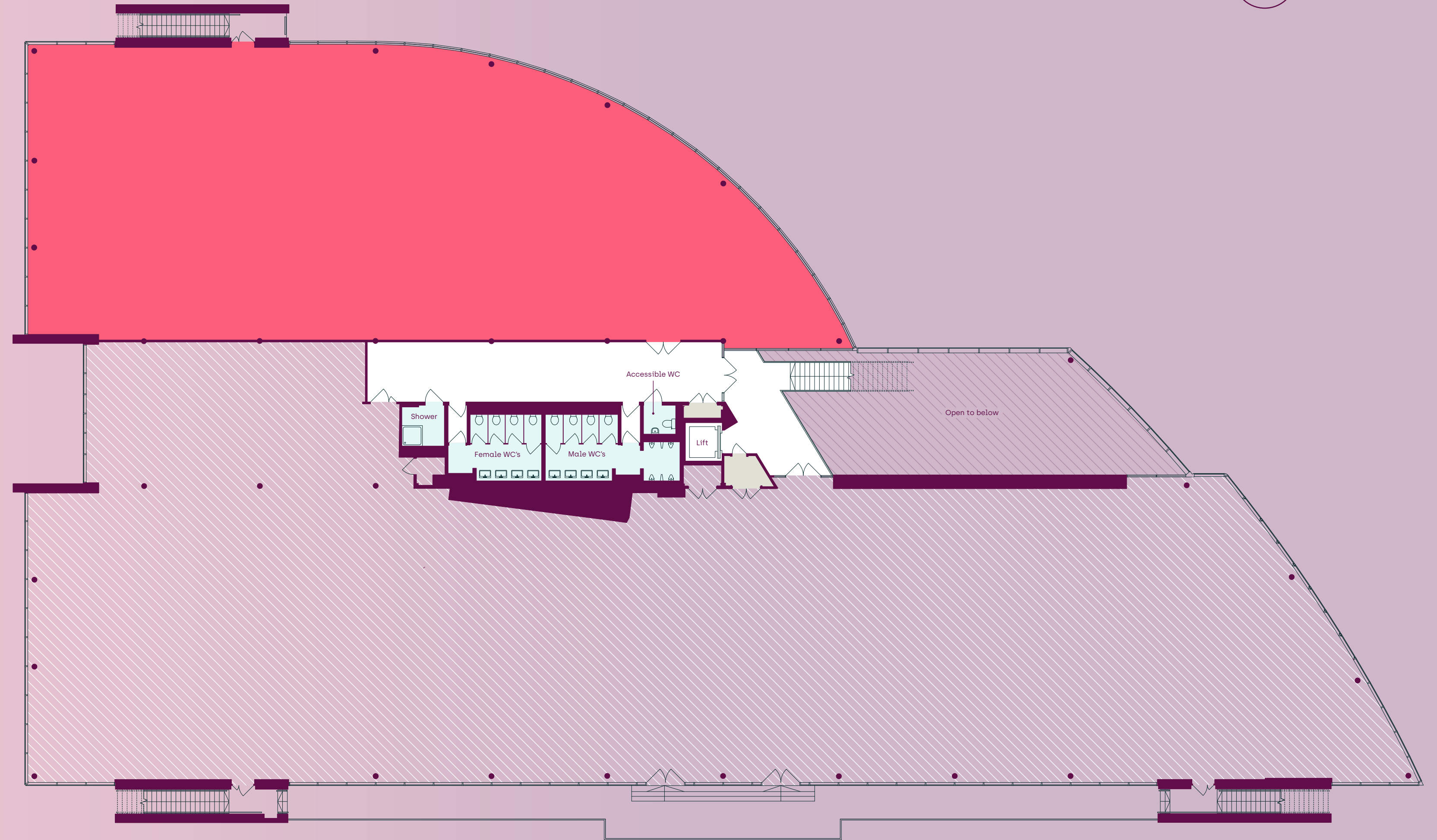
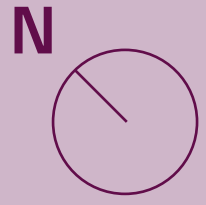
24-hour Park security

28 car spaces [1:420]



First Floor

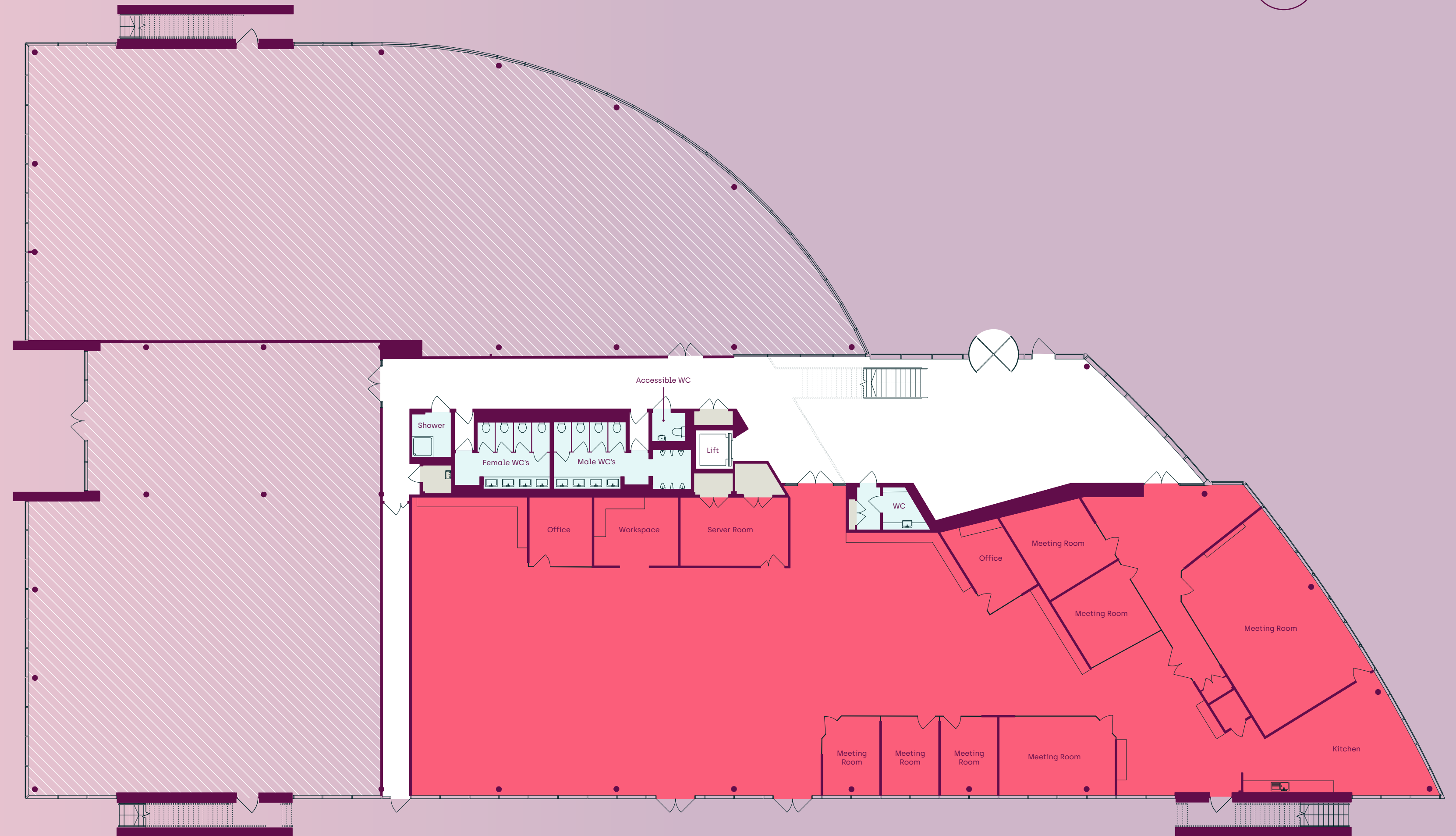
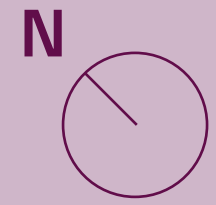
5,858 sq ft
[544 sq m]



- Available
- WCs/Showers
- Risers/Cupboards
- Core
- Let

Ground Floor

7,723 sq ft
[718 sq m]



Available

WCs/Showers

Risers/Cupboards

Core

Let



Flourish amidst nature's tranquillity

Set within 112 acres of green space, including an idyllic nature reserve, wild meadows and walking routes, occupiers can enjoy calm, leafy surroundings throughout the campus. Tended with care, this environment sparks creativity and emphasises the powerful force of nature.



Be part of a connected ecosystem



Cambridge Research Park is a nurturing ecosystem of like-minded businesses. We encourage our community to come together through collaborative spaces, shared amenities and a monthly networking programme co-ordinated by our Community Manager.



THE SITE

- Building 1000
- Cambridge Research Park
- Nature Reserve
- Development plots
- 1 Entrance
- 2 No 100 Bus Stop
- 3 Community Manager Office

PARK AMENITIES

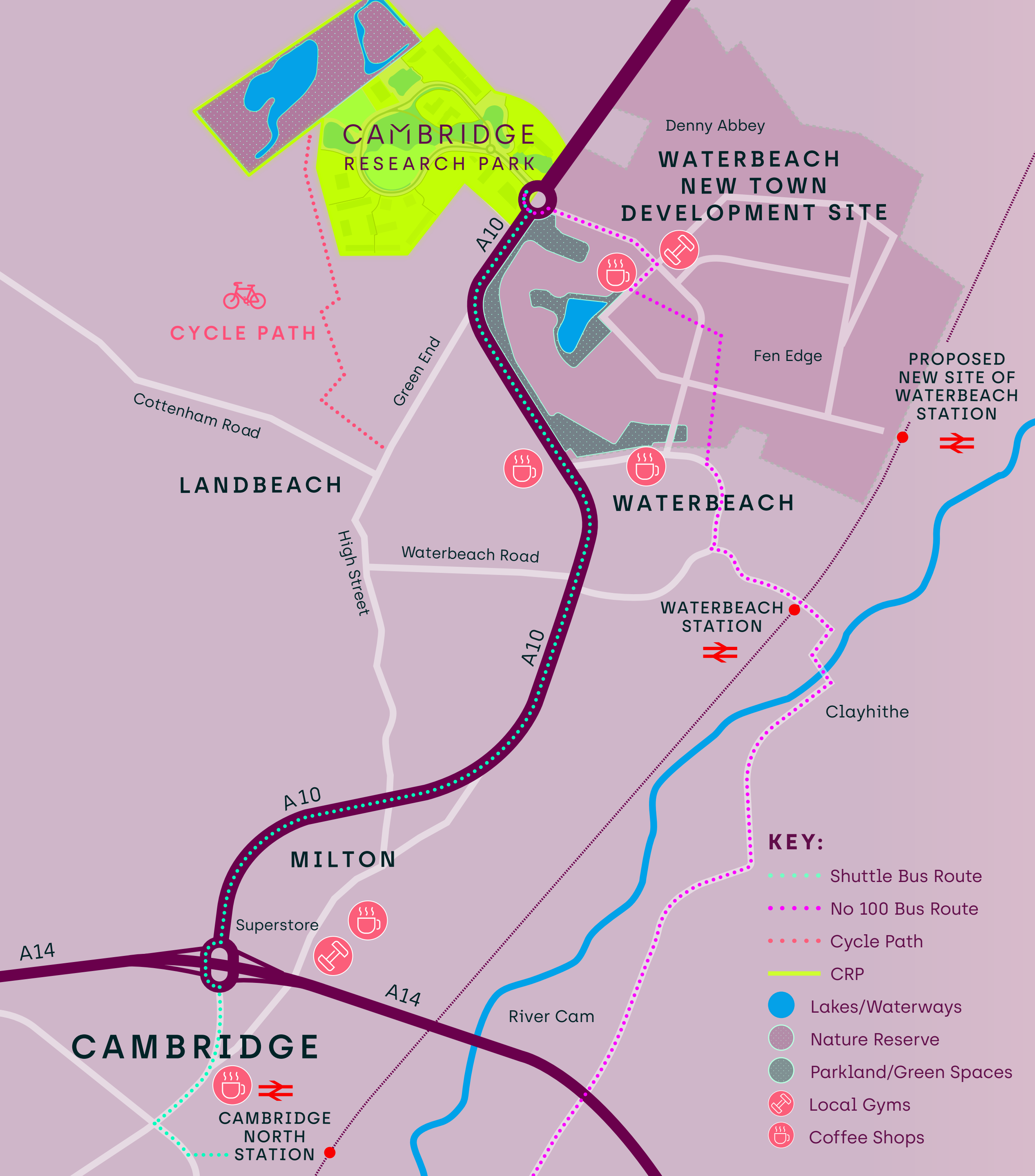
- Nature Reserve
- Shuttle Bus Stops

ONSITE AMENITIES AT 2500

- The Boardwalk Café
- Conference Space
- Meeting Rooms
- JLL Management Office
- Yoga

OCCUPIERS

1000	stobbs	Enterprise I	6100	Vindis	8200	centillion
	national highways	HBio	7100	STEMCELL		St James's Place
	green + purple.	GRIFOLS	7200	celixica		
2000	Clear-Com	UNIVERSITY OF CAMBRIDGE	7300	NHS	9000	sepura
3000	KIER	SMC Ltd.	8100	NATROX		
	MICROCHIP	XARR		revvity		
		PocDoc				



Find your campus space

0.5 miles
to Waterbeach New Town

2.7 miles
to Waterbeach Station

5.5 miles
to Cambridge North Station

9 miles
to Ely or central Cambridge

9 mins
to A14

12 mins
to M11

**FOR MORE INFORMATION PLEASE CONTACT
ONE OF OUR LETTING AGENTS:**

CBRE

Jeremy Rodale

+44 (0)7766 780 590

jeremy.rodale@cbre.com

Chris Williams

+44 (0)7796 694 501

chris.williams@cbre.com

Peter Mangraviti

+44 (0)7861 6926 20

peter.mangraviti@cbre.com



BIDWELLS

Tamarah Keir

+44 (0)7442 668 105

tamarah.keir@bidwells.co.uk

Max Bryan

+44 (0)7793 808 114

max.bryan@bidwells.co.uk

cambridgeresearchpark.co.uk

rlam.com

A DEVELOPMENT BY ROYAL LONDON ASSET MANAGEMENT



Bidwells and CBRE for themselves and for the vendors or lessors of this property whose agents they are, give notice that: (i) the particulars are set out as a general outline only for the guidance of intending purchasers or lessees, and do not constitute nor constitute part of, an offer or contract; (ii) all descriptions, dimensions, references to condition and necessary permissions for use and occupation, and other details are given without responsibility and any intending purchasers or lessees should not rely on them as statements or representations of fact but must satisfy themselves by inspection or otherwise as to the correctness of each item; (iii) no person in the employment of Bidwells and CBRE has any authority to make or give any representation or warranty whatever in relation to this property. April 2026.